



ISM/WiFi 90° Panel Antenna

- Rugged State-of-the-Art Construction
- Broadband Performance

Model ISMNF90-2400-16-T0-N

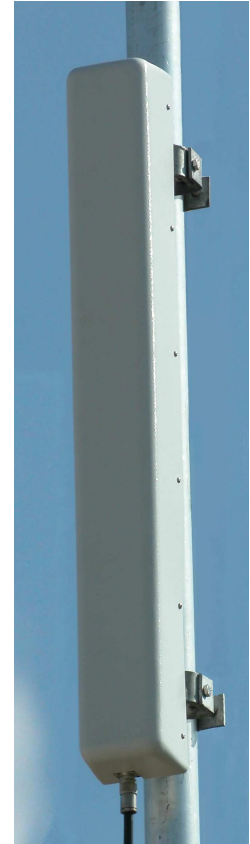
- Null-filling between Lower Sidelobes
- Upper Sidelobe Suppression

ELECTRICAL SPECIFICATIONS

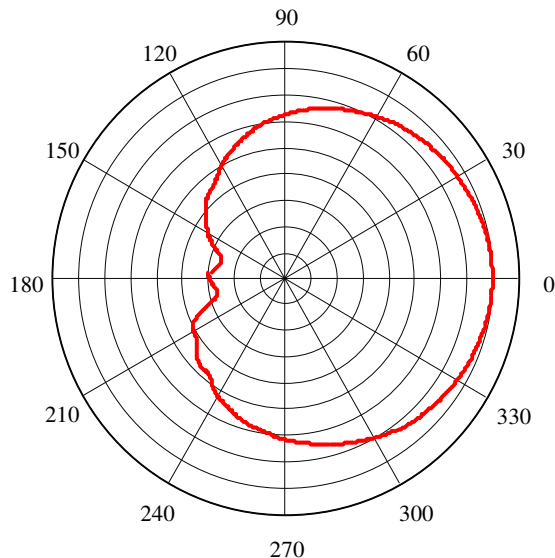
Frequency Range	2300-2700 MHz
VSWR	1.4:1 (Max)
Forward Gain	15.9 dBi
Polarization	Vertical
Maximum Power Input	200 Watts
Vertical -3dB Beamwidth	7.5° +/- 0.2°
Horizontal -3dB Beamwidth	90° +/- 5°

MECHANICAL SPECIFICATIONS

Connector	Type 'N' Female
Mounting	Pole mount (up to 3" dia.)
Dimension (L x W x H)	34" x 4.1" x 3.4" (864 mm x 104 mm x 86 mm)
Weight	<9 lbs (<3.4kg)
Color	Gray



Horizontal Pattern



Vertical Pattern

