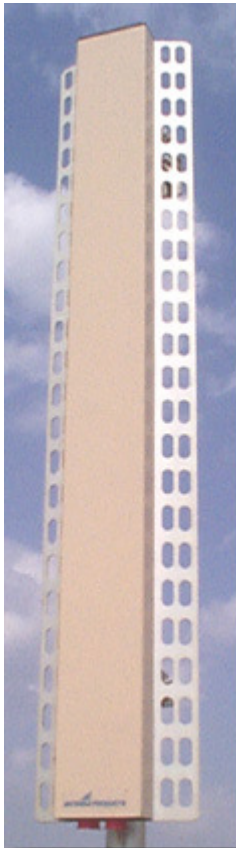


**PCS 90
Degree
Panel
Antenna
11-18
dBi
Gain**

PHAZAR™
WIRELESS ANTENNAS

- One-Piece Seamless Radome
- Three color choices or custom match
- 5 Year Guarantee
- UV Stabilized Epoxy Fiberglass Radome
- 0-8 Degrees Adjustable Mechanical Downtilt Available
- 7/16 DIN Female Input Connector
- Aluminum Radiating Elements
- Wall Mount or 1.5-2.75 Inch Pipe Mount
- Model PCS90-1850-18-T0
- Model PCS90-1850-11-T0
- Model PCSD90-1850-14-T0 (Dual Antenna)
- Model PCSD90-1850-13-T0 (Dual Antenna)



GENERAL ELECTRICAL SPECIFICATIONS

SPECS	RATING
Frequency Range	1850-1990 MHz
Maximum Power Input	300 Watts Continuous
Electrical Downtilt	0-4 Degrees Available
Polarization	Vertical
Impedance	50 Ohms
Intermodulation	Less than -153 dBc for 2x20 Watt Carriers

DETAILED ELECTRICAL SPECIFICATIONS

Model Number	Gain Dbi	VSWR Typical / Maximum	F/B Ratio dB	First Side Lobe Above Horizon	Electronic Null Fill Below Main Beam	Horizontal Beamwidth, Degrees	Vertical Beamwidth, Degrees
PCS90-1850-18-T0	18.5	1.25/1.5	>30	<-25 dB	Filled to -25 dB	90 (+/- 3)	5.5 (+/- 0.5)
PCS90-1850-11-T0	11.2	1.25/1.5	>25	<-20 dB	Filled to -15 dB	90 (+/- 3)	28 (+/- 2.0)
PCSD90-1850-14-T0	14.5	1.25/1.5	>25	<-20 dB	Filled to -25 dB	90 (+/- 3)	14 (+/- 1.0)
PCSD90-1850-13-T0	13.5	1.25/1.5	>25	<-20 dB	Filled to -15 dB	90 (+/- 3)	16 (+/- 1.0)

DETAILED MECHANICAL SPECIFICATIONS

PCSD90-1850-13-T0

Model Number	Height Inches	Width Inches	Depth Inches	Lateral Thrust @ 100 MPH	Torsional Moment @ 100 MPH	Frontal Flat Plate Eq. Sq. Ft.	Weight Pounds
PCS90-1850-18-T0	77.0	9.7	3.1	172 lbs	57 ft lbs	4.31	25
PCS90-1850-11-T0	16.8	9.7	3.1	38 lbs	9.2 ft lbs	0.95	16
PCSD90-1850-14-T0	77.0	9.7	3.1	172 lbs	34 ft lbs	4.31	25
PCSD90-1850-13-T0	52.0	9.7	3.1	117 lbs	18 ft lbs	2.93	22

ENVIRONMENTAL SPECIFICATIONS

Wind Survival	120 MPH
Lightning Protection	Direct Ground