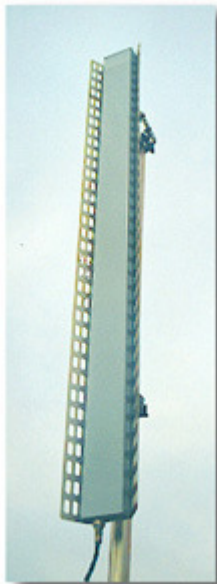


**50
Degree
PCS
Panel
Antenna
13-21
dBi
Gain**

PHAZAR™
WIRELESS ANTENNAS

- One-Piece Seamless Radome
- Three Color Choices Or Custom Match
- 5 Year Guarantee
- Electrical Or Mechanical Downtilt
- Custom Pattern Design For Difficult Areas
- 16 and 18 dBi Dual Antennas



ELECTRICAL SPECIFICATIONS

Frequency Range	1850 to 1990 MHz
Maximum Power Input	600 Watts Continuous
Electrical Downtilt	0 to 8 Degrees
Polarization	Vertical
Impedance	50 Ohms
Intermodulation	Less than -153 dBc for 2x20 watt carrier

Model Number	Gain, dBi	Typical VSWR	F/B Ratio (dB)	First Side Lobe Above Horizon	Electronic Null Fill Below Main Beam	Horizontal Beamwidth (Degrees)	Vertical Beamwidth (Degrees)
PCS50-1850-21-T0	21.2	1.25:1	>35	<-30 dB	Filled To >-25 dB	50 (+/-4)	5.5 (+/-0.5)
PCS50-1850-20-T0	20.2	1.25:1	>35	<-30 dB	Filled To >-25 dB	50 (+/-4)	6.0 (+/-0.5)
PCS50-1850-19-T0	19.2	1.25:1	>35	<-25 dB	Filled To >-25 dB	50 (+/-4)	8.0 (+/-0.5)
PCS50-1850-18-	18.2	1.25:1	>35	<-25 dB	Filled To >-25 dB	50 (+/-4)	14 (+/-1.0)

T0								
PCS50-1850-16-T0	16.2	1.25:1	>30	<-20 dB	Filled To >-15 dB	50 (+/-4)	16 (+/-1.0)	
PCS50-1850-13-T0	13.2	1.25:1	>30	<-20 dB	Filled To >-15 dB	50 (+/-4)	28 (+/-1.0)	
PCSD50-1850-18-T0	18.2	1.25:1	>30	<-20 dB	Filled To >-25 dB	50 (+/-4)	14 (+/-2.0)	
PCSD50-1850-16-T0	16.2	1.25:1	>30	<-20 dB	Filled To >-15 dB	50 (+/-4)	16 (+/-1.0)	

MECHANICAL SPECIFICATIONS

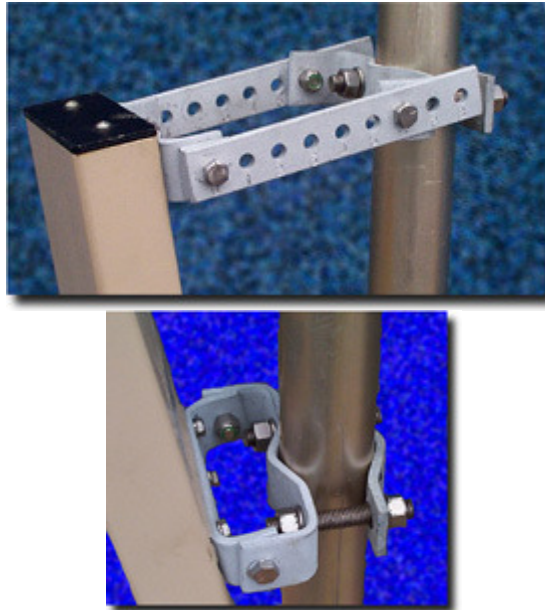
Mechanical Downtilt	0 to +8 Degrees Mount Available
Input Connector	7/16 inch DIN Female
Radiating Element	Aluminum
Radome Material	UV Stabilized Epoxy Fiberglass
Mounting	Wall mount or Pipe Mount (1.5 to 2.75 Inch Diameter Pipe)

Model Number	Height Inches	Width Inches	Depth Inches	Frontal Wind Loading @ 100 MPH	Side Wind Loading @ 100 MPH	Frontal Area Flat Plate EQ, SQ FT	Side Area Flat Plate EQ, SQ FT	Weight Pounds
PCS50-1850-21-T0	77	9.0	2.9	160 lbs	54 lbs	3.99	1.34	26
PCS50-1850-20-T0	64.5	9.0	2.9	134 lbs	45 lbs	3.35	1.13	25
PCS50-1850-19-T0	52	9.0	2.9	109 lbs	36 lbs	2.71	.91	23
PCS50-1850-18-T0	39.5	9.0	2.9	82 lbs	28 lbs	2.47	.79	21

PCS50-1850-16-T0	26.8	9.0	2.9	56 lbs	18 lbs	1.41	.47	18
PCS50-1850-13-T0	16.8	9.0	2.9	35 lbs	12 lbs	.88	.29	16
PCSD50-1850-18-T0	77	9.0	2.9	160 lbs	54 lbs	3.99	1.34	26
PCSD50-1850-16-T0	52	9.0	2.9	109 lbs	36 lbs	2.71	.91	23

ENVIRONMENTAL SPECIFICATIONS

Wind Survival	120 MPH
Lightning Protection	Direct Ground



Optional Adjustable Down Tilt Mounting Brackets