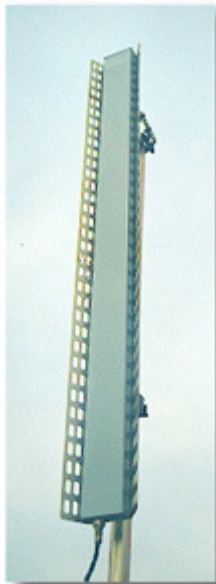


**33  
Degree  
PCS  
Panel  
Antenna  
15-24  
dBi  
Gain**

**PHAZAR™  
WIRELESS ANTENNAS**

- One-Piece Seamless Radome
- Three Color Choices Or Custom Match
- 5 Year Guarantee
- Electrical Or Mechanical Downtilt
- Custom Pattern Design For Difficult Areas
- 18 and 20 dBi Dual Antennas



**ELECTRICAL SPECIFICATIONS**

Frequency Range	1850 to 1990 MHz
Maximum Power Input	500 Watts Continuous
Electrical Downtilt	1-4 Degrees
Polarization	Vertical
Impedance	50 Ohms
Intermodulation	Less than -153 dBc for 2x20 watt carrier

Model Number	Gain, dBi	VSWR, Typical/Maximum	F/B Ratio (dB)	Horizontal Beamwidth (Degrees)	Vertical Beamwidth (Degrees)
PCS33-1850-24-T0	24	1.25/1.5	>35	33 (+/-4)	5.0 (+/-0.5)
PCS33-1850-15-T0	15	1.25/1.5	>33	33 (+/-4)	28 (+/-2.0)
PCSD33-1850-20-T0	20	1.25:1	>35	33 (+/-4)	14 (+/-1.0)
PCSD33-1850-18-T0	18	1.25/1.5	>35	33 (+/-4)	16 (+/-1.0)

**MECHANICAL SPECIFICATIONS**

Mechanical Downtilt	-12 to +5 Degrees Mount Available
Input Connector	7/16 inch DIN Female
Radiating Element	Aluminum
Radome Material	UV Stabilized Epoxy Fiberglass
Mounting	Wall mount or Pipe Mount (1.5 to 2.75 Inch Diameter Pipe)

Model Number	Size, Inches	Frontal Area Flat Plate EQ, SQ FT	Lateral Thrust @ 100 MPH	Torsional Moment @ 100 MPH	Weight Pounds
PCS33-1850-24-T0	89 x 10.5 x 6.3	4.5	170 lbs	162 ft lbs	28
PCS33-1850-15-T0	16.8 x 10.5 x 6.3	1.1	41 lbs	25 ft lbs	17
PCSD33-1850-20-T0	77 x 10.5 x 6.3	4.1	165 lbs	124 ft lbs	27
PCSD33-1850-18-T0	52 x 10.5 x 6.3	2.9	114 lbs	83 ft lbs	24

## ENVIRONMENTAL SPECIFICATIONS

Wind Survival	120 MPH
Lightning Protection	Direct Ground





Optional Adjustable Down Tilt Mounting  
Brackets