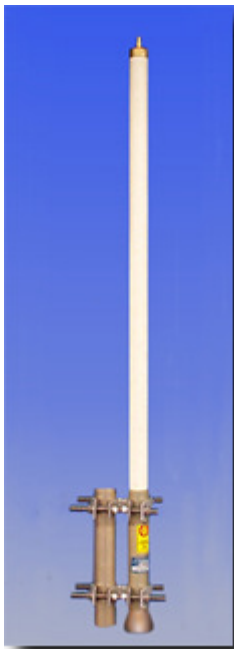


**Extra
Heavy
Duty 8
dBi 920-
935
MHz
Dual
Paging
Antenna**

PHAZAR™
WIRELESS ANTENNAS

The PAG360-920/920-8-T0 dual contains two omni antennas, for Paging applications, that are enclosed in a single seamless radome with Type N connectors. The antennas are rated at 500 watts continuous power and will withstand extreme weather conditions.



ELECTRICAL SPECIFICATIONS

SPECS	PERFORMANCE
Frequency Range	920-935 MHz & 920-935 MHz
VSWR	1.3:1 (Typ)
Forward Gain (over half-wave dipole)	8 dBi (Both Antennas)
Polarization	Vertical
Max Power Input	500 Watts Continuous with Type N Connector
Vertical Beamwidth (-3 dB Points)	10 Degrees
Horizontal Beamwidth (-3 dB Points)	Omni
Electrical Downtilt	0-6 Degrees

MECHANICAL SPECIFICATIONS

SPECS	PERFORMANCE
Termination	Type N Female
Mounting Clamps	Galvanized Clamps and Stainless Steel Hardware
Weight	17.5 lbs, Clamps 6 lbs
Wind Load @ 100 MPH	83 lbs
Antenna Dimensions, Inches	162 Long x 2.375 Inch OD
Flat Plate Equivalent	1.6 Sq Ft

ENVIRONMENTAL SPECIFICATIONS

Wind Survival	160 MPH
Lightning Protection	Direct Ground
Bending Moment at 100 MPH Wind 1 Inch Below Top of Support Pipe	430 Ft Lbs